



TytoPro

Perfect solution for the preliminary examination of older patients at home or in nursing homes

- How often can a physician visit all patients in a nursing home?

- How many emergency calls and ambulance responses are actually unnecessary?

The TytoPro remote examination solution can help solve these challenges and improve care for older patients.

The TytoPro examination kit includes a handheld device with hardware and AI-powered software for examining the heart, lungs, throat, skin, ears and body temperature, as well as earphones for improved audio quality.



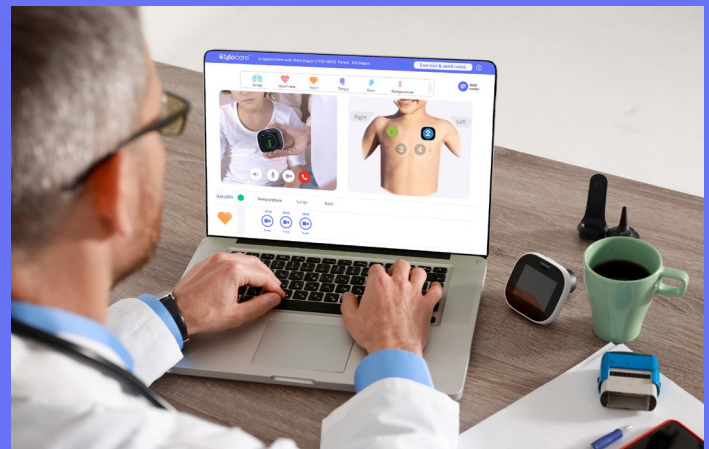
Tyto is suitable for diagnosing acute conditions such as colds, flu, middle-ear infections, bronchitis and sore throat, as well as for monitoring and managing patients with chronic diseases such as hypertension, asthma, COPD, congestive heart failure (CHF) and diabetes.

With the Tyto clinician workflow, examination data can be reviewed immediately on site for diagnosis or stored in the patient's electronic medical record (EMR) for later analysis, continuity of care and ongoing symptom tracking.

For second opinions or specialist consultations, an instant online video conference provides additional support. The clinician can interact with the patient in real time and review the collected examination data to confirm or suggest a diagnosis.



Mobile care staff member on site collecting the examination data...



...and sharing these examination data with a consulting physician

Features

- Tyto device with examination camera and thermometer
- Tyto otoscope, stethoscope (with volume, bell and diaphragm filters), tongue depressor adapter and ear tips
- Platform includes the TytoApp and Clinician Dashboard for conducting live video telehealth exams, reviewing exams and communicating with patients
- Customized workflow for clinicians
- HIPAA-secure, GDPR-compliant AWS cloud storage

Benefits

- Improve patient care and satisfaction
- Make better use of physicians' time and increase productivity

Applications

- Expand medical services to remote locations such as schools, nursing homes, clinics, workplaces, urgent care and EMS providers.
- Quickly and easily obtain specialist consultation or a second opinion.
- Examine, capture and share images with patients to explain the diagnosis and motivate treatment.
- Send examination data to the electronic medical record (EMR) to support continuity of care.

- Reduce unnecessary urgent care and emergency department visits; treat more patients at home
- Improve workload distribution (clinics and urgent care)
- Reduce costs

TytoPro is more than a device: it is a comprehensive telemedicine platform:

- The most comprehensive telemedicine examination and treatment solution on the market
- FDA and CE cleared, HIPAA and GDPR compliant
- Clinician Dashboard for live video exams or "Exam and Forward"
- Open API integration with electronic medical records, existing telemedicine systems and third-party tools
- Workflow management and analytics



hello@mse-group.co

+43 664 414 8288



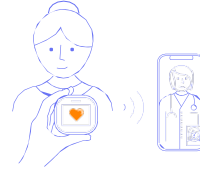
Patient Journey



1 Resident calls staff with medical complaint



2 Staff requests visit in Tyto and Avera eCARE clinician joins the virtual visit



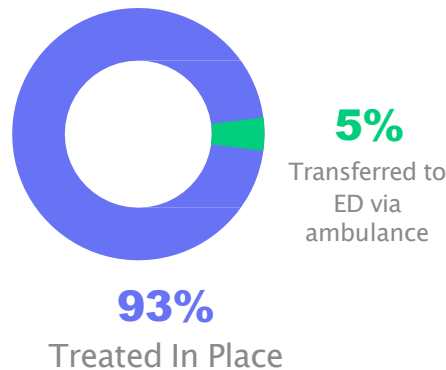
3 Avera eCARE clinician guides staff member on various exams



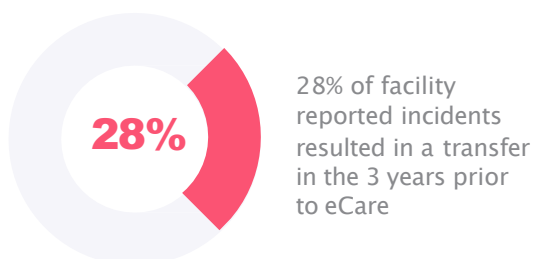
4 Avera eCARE clinician provides a clinical assessment and treatment plan

Treatment in Place

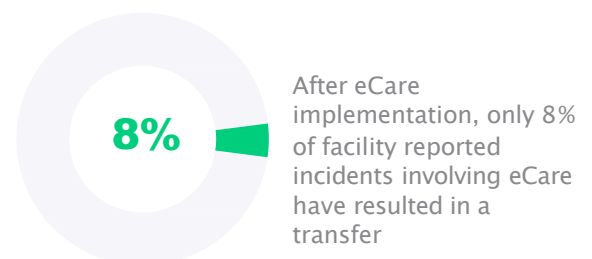
YTD 93% of Residents Treated In Place & Only 5% Transferred to ED via EMS



Reduction of Transfers



Pre Tyto & eCARE
28% transfers



Post Tyto & eCARE
8% transfers



MSE GROUP
Simulation & Telehealth Solutions

tytocare™

hello@mse-group.co

+43 664 414 8288

